

Preferred Alternative Proposal

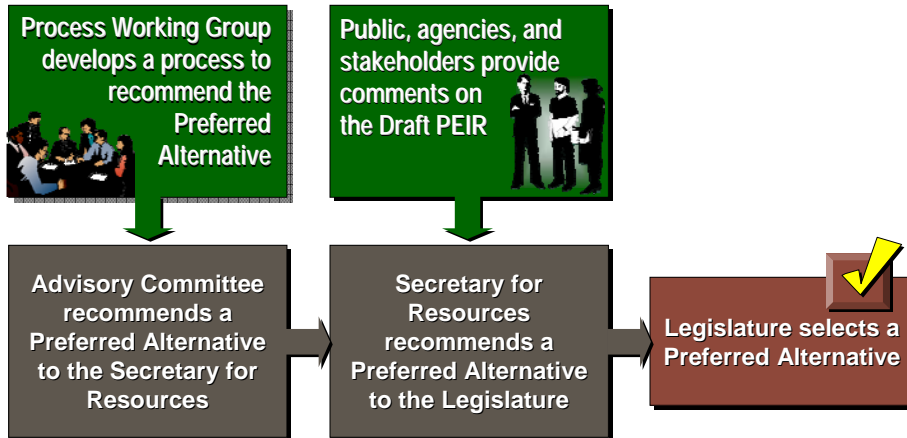


Advisory Committee
March 27, 2007

Agenda

- ◆ **Formation of the Preferred Alternative Proposal**
- ◆ **Description of the Preferred Alternative Proposal**
 - **Preferred Alternative Proposal Components**
 - **Sizes and Comparisons**
 - **Phasing Assumptions**
 - **Schedule**
 - **Costs**

Steps for Selecting a Preferred Alternative



Formation of the Preferred Alternative Proposal

- ◆ **Legislative Objectives**
- ◆ **Advisory Committee process for identifying a Preferred Alternative**
- ◆ **Public Comments**

Legislative Goals and Objectives

- ◆ **To provide the maximum feasible attainment of the following objectives:**
 - **Restoration of long term stable aquatic and shoreline habitat for the historic levels and diversity of fish and wildlife that depend on the Salton Sea**
 - **Elimination of air quality impacts from the restoration project**
 - **Protection of water quality**

Advisory Committee Process for Identifying a Preferred Alternative

- ◆ **Step 1: Advisory Committee formed the Preferred Alternative Process Working Group**
- ◆ **Step 2: Working Group identified process, attributes, and reported back to Advisory Committee**
- ◆ **Step 3: Advisory Committee directed Technical Working Groups to:**
 - **Review/add attributes**
 - **Prioritize attributes**
 - **Score alternatives with respect to attributes**
 - **Provide information to Process Working Group**

Overall Observations of Preferred Alternative Process Working Group

- ◆ **Early Start Habitat and shallow saline habitat should be included in Preferred Alternative**
- ◆ **Most potential impacts can be mitigated - but many will remain "significant"**
- ◆ **Non-legislatively mandated recreation and economic opportunities could be incorporated into any alternative**
- ◆ **Some details are more appropriately developed at the project level (e.g. Air Quality Management)**

Advisory Committee Comments - February 27, 2007 Meeting

- ◆ **Include Saline Habitat Complex and Marine Sea**
- ◆ **Include Early Start Habitat**
- ◆ **Protect air quality**
- ◆ **Protect water quality to improve habitat**
- ◆ **Improve odor problems**
- ◆ **Consider Alternative 5 (in the Draft PEIR) with some components from other alternatives**

Major Public Comments related to the Preferred Alternative

- ◆ **Protect fish and birds that use the Salton Sea**
 - **Include Marine Sea plus Saline Habitat Complex**
 - ❖ Saline Habitat Complex would be at least 25,000 to 50,000 acres
 - **Include Early Start Habitat**
 - **Minimize water quality problems**
- ◆ **Protect air quality**
 - **Use the air quality tool box actions as described in the Draft PEIR**
- ◆ **Maintain Salton Sea as agricultural repository**
- ◆ **Protect agricultural microclimate and minimize salt dust**

Major Public Comments related to the Preferred Alternative

- ◆ **Consider design adaptability to fluctuating inflows**
 - **High flows during floods**
 - **Low annual flows due to water conservation, land use changes, and climate changes**
- ◆ **Maintain water near communities, State Recreation Area, and wildlife areas**
- ◆ **Incorporate new Torres Martinez Reservation land use plan**
- ◆ **Provide for recreational and economic opportunities**

Preferred Alternative Proposal

◆ Saline Habitat Complex

- More than Alternative 5 and less than Alternative 2

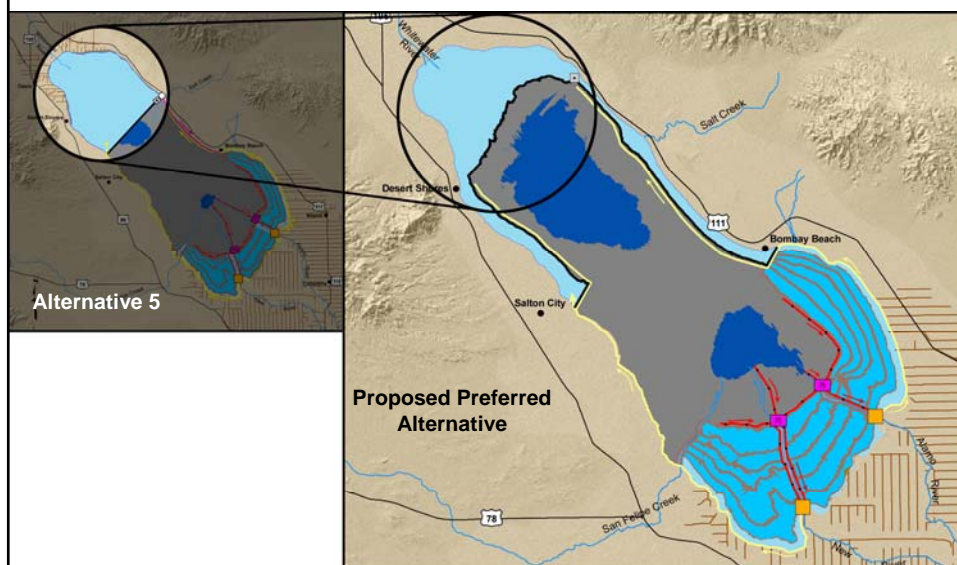
◆ Marine Sea

- Northern Marine Sea (similar to Alternative 5)
 - ❖ Maintain water depth of less than 12 meters deep to reduce water quality risks (as described in Draft PEIR)
- Extend Marine Sea along western and eastern shorelines (similar to Alternative 3)
 - ❖ Maintain water depth of less than 12 meters without intermediary ring levees

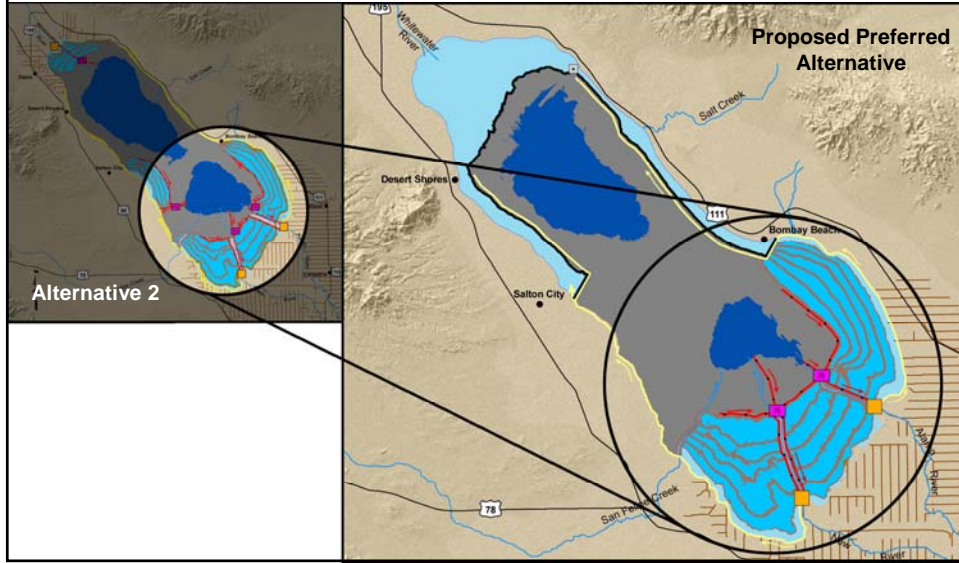
◆ Air Quality Management

- Actions as in Alternatives 2, 3, and 5

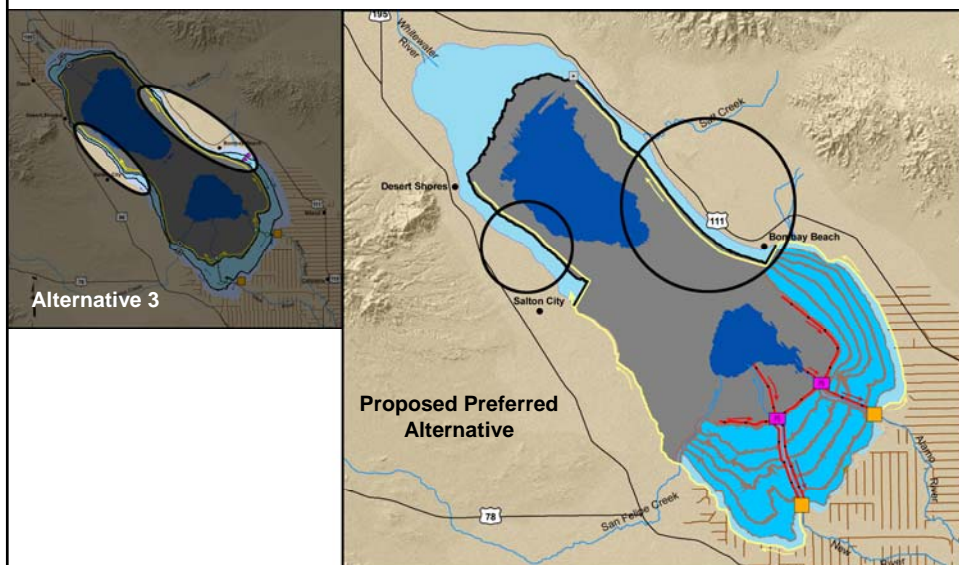
Proposed Preferred Alternative Incorporates Marine Sea Concept from Alternative 5



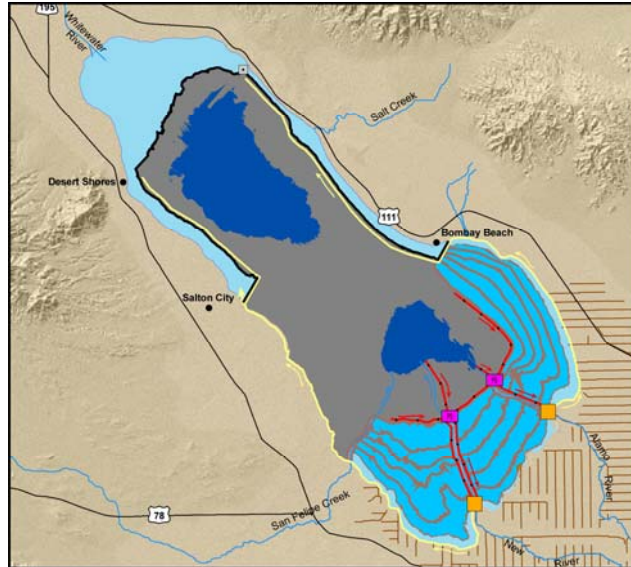
Proposed Preferred Alternative
Incorporates Saline Habitat Complex
Concept from Alternative 2



Proposed Preferred Alternative
Incorporates Concentric Ring Concept
from Alternative 3



Proposed Preferred Alternative



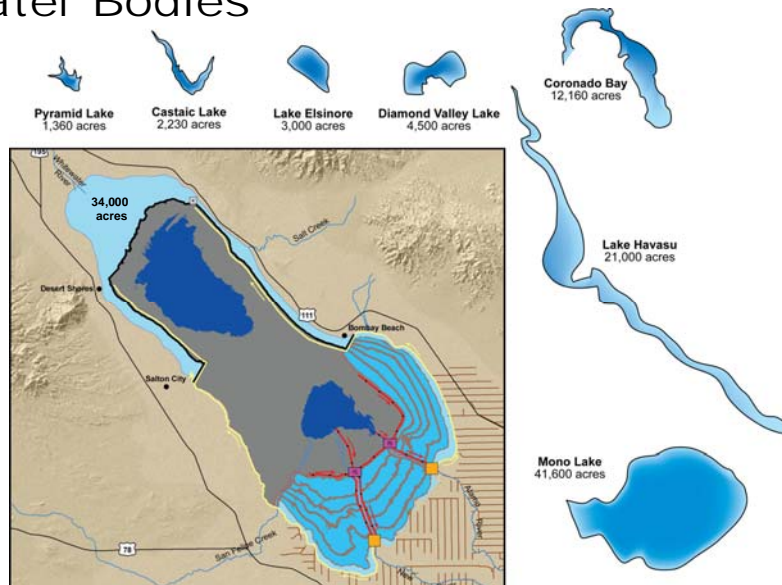
Preferred Alternative Proposal Details

- ◆ **Saline Habitat Complex = 62,000 acres (total)**
- ◆ **Marine Sea = 34,000 acres**
 - Formed by 2022
 - Salinity less than 40,000 mg/L by 2023
- ◆ **Exposed Playa = 109,000 acres**
- ◆ **Brine Sink = 29,000 acres**
 - Salinity less than 200,000 mg/L until 2027

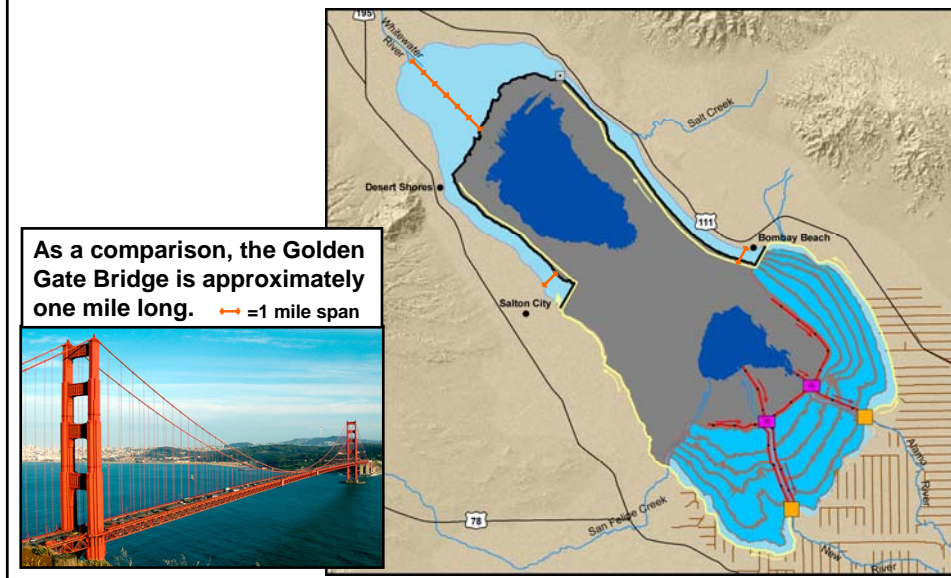
Comparison of Marine Sea to Other Water Bodies

- ◆ **Proposed Preferred Alternative Marine Sea = 34,000 acres**
- ◆ **Mono Lake = 41,600 acres**
- ◆ **Lake Havasu = 21,000 acres**
- ◆ **San Diego Bay = 12,160 acres**
- ◆ **Diamond Valley Lake = 4,500 acres**
- ◆ **Lake Elsinore = 3,000 acres**
- ◆ **Lake Perris = 2,250 acres**
- ◆ **Castaic Lake = 2,230 acres**
- ◆ **Skinner Lake = 1,400 acres**
- ◆ **Pyramid Lake = 1,360 acres**

Comparison of Marine Sea to Other Water Bodies



Proposed Preferred Alternative Marine Sea Distances



Components That Could Be Considered During Project-level Analysis

- ◆ **Recreation/Estuary Lake**
- ◆ **IID Reservoir**
- ◆ **Water treatment facilities**
- ◆ **Wetland treatment upstream in the New and Alamo rivers**
- ◆ **Saline Habitat Complex on the north**

Major Project Level Study and Design (See Five-Year Plan)

- ◆ **Complete project-level CEQA**
- ◆ **Conduct bathymetric surveys**
- ◆ **Analyze flow data available after 2004**
- ◆ **Conduct monitoring and testing**
 - **Emissions from exposed playa**
 - **Water quality of inflows**
 - **Soils under Saline Habitat Complex & Marine Sea**
 - **Geotechnical (soils, seismic, and hazards)**
- ◆ **Analyze construction methods and materials**
- ◆ **Complete site-specific biological studies**
 - **Breeding and roosting locations**
- ◆ **Complete Pre-designs and Final Designs**

Proposed Preferred Alternative Assumptions (Same As In The Draft PEIR)

- ◆ **Project level analyses, designs, and site access will be completed by 2014**
- ◆ **Inflow amounts and prioritization**
- ◆ **Construction of some components only after water recedes**
 - **Saline Habitat Complex**
 - **Air Quality Management**
 - **Access roads**
- ◆ **Construction of barriers using barges before water recedes**



